



---

## ADVANCED RF MODELING AND SIMULATION

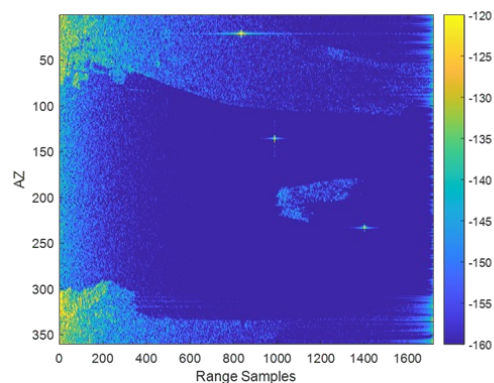
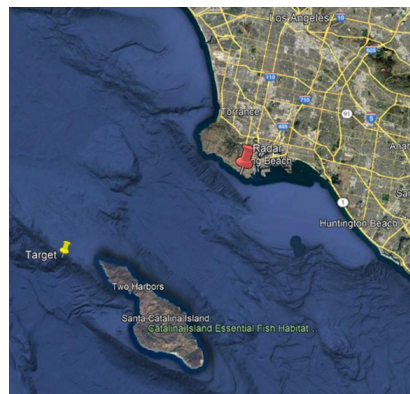
RFView® M&S is an advanced site-specific radio frequency simulation and analysis environment. The simulation environment is built on ISL's industry-leading RF phenomenology engine that has successfully supported numerous advanced development projects for Government and commercial customers since 1989.

*RFView® M&S is available with quick start examples for synthetic aperture radar (SAR), ELINT, passive radar, MIMO radar, and many more. Check out our website, [www.islinc.com](http://www.islinc.com), or contact Alex Talbott ([atalbott@islinc.com](mailto:atalbott@islinc.com)) to learn more or get an evaluation copy!*

---

### **RFView® Capability Highlight**

*RFView® M&S* offers the capability to simulate high fidelity littoral RF scenarios. Below (on the right) is an example of RFView generated clutter from an S-band Ground Radar in wide area search (WAS) mode with 3 targets.



To learn more, read the [RFView® M&S](#) brochure.

To schedule a virtual demo, [contact us](#).

---

## ***RFView® 3.6 Updates***

We are excited to announce the latest RFView® 3.6 release, delivered on 18 Jan 2023, Included the following updates:

- Users can include directional patterns for individual elements of the antenna array
- Full 3D rotations of custom user loaded antenna patterns
- Significant improvement of memory utilization for some key functions
- Polarization sensitive target multipath channels computed using SEKE code
- New ground-based scanning radar examples added

---

## ***Recent Customer Applications***

Our **RFView®** Customers have been using **RFView®** for their applications in:

- Airborne Early Warning (AEW) Radar
- Ground Based Radar
- Radar Altimeters
- Space-based Radar
- Radar Seekers
- UAV Radars
- Advanced EW techniques, and many others.

---

**For more information:**

**Email: Alex Talbott**  
**Phone #: 727-309-1444**

ISL | 4225 Executive Square, Suite 570, La Jolla, CA 92037

[Unsubscribe newsletter@islinc.com](mailto:unsubscribe_newsletter@islinc.com)

[Update Profile](#) | [Constant Contact Data Notice](#)

Sent by [newsletter@islinc.com](mailto:newsletter@islinc.com) powered by



Try email marketing for free today!